

R.I.L.K.O.



STUDIES IN PATTERNS

Conference 2018

STAR PATTERNS & SACRED SITES

Rudolf Steiner House, 35 Park Road, London NW1 6XT

Saturday 6th October

10.00 a.m. - 7.00 p.m.

All Welcome



Maria Wheatley

Celtic Constellations and
associations with Ancient Sites

Duncan Lunan

Radio Echoes, Green Children
and a Cosmic Mystery

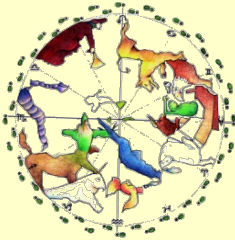
Chris O'Kane

The Pharaoh, the Stars and
a God named Horakhti



John Wadsworth

Star Myths and the Turning Wheel
of Your Zodiac Soul



Hartmut Warm

Harmony of the Celestial Spheres –
Musical Intervals and Planetary Ratios



Book online:

www.eventbrite.ca/e/star-patterns-sacred-sites-rilko-conference-2018-tickets-45231259916



£50 Members £55 Non Members
£5 Early Bird discount (before 1st August)

Enquiries: 01795 533470
Refreshments and lunch available



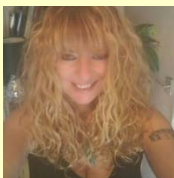
CHRIS O'KANE is an amateur astronomer and researcher. He is a member, Past-President and Vice-President of the Astronomical Society of Glasgow. He lectures widely on astronomical subjects and has produced research for authors Graham Hancock and Robert Bauval concerning the astronomy, kingship and religion of ancient Egypt. His lecture will focus on Horakhti, the God we recognise as Horus, in his aspect as a Sun God. Chris is also a member of the Society for Planetary SETI Research (SPSR) looking for evidence of ET artefacts in the solar system. He led a student project to research the anomalies of Cydonia on Mars, discovering a pyramidal hill now named after North Kelvinside High School. His published book is entitled *Journey to Cydonia: The First Small Step* (2017).

DUNCAN LUNAN is former Assistant Curator of Airdrie Public Observatory; as Manager of the Glasgow Parks Astronomy Project, he designed and built the first astronomically aligned stone circle in Britain for over 3000 years. His talk will explore the origins of the Green Children of Woolpit, who appeared in a Suffolk village in the late 12th century. Described as having emerged from a land of permanent twilight, was this a planet with a trapped rotation, keeping the same face always towards the Sun as the Moon does towards the Earth? Duncan Lunan is author of *Man and the Stars* (1974), *Man and the Planets* (1983), *Children from the Sky* (2012), *The Stone and the Stars* (2012), *Incoming Asteroid* (2013), *The Elements of Time* (2016), and editor of *Starfield*. www.duncanlunan.com



JOHN WADSWORTH has been working as a professional astrologer since 1993. He is the founder of the Kairos School of Astrology in Glastonbury and is known for his innovative experiential approach to astrological education. He will discuss the mythical origins of the twelve zodiac constellations and how we can work with them practically and alchemically in our everyday lives. John's recently published book, *Your Zodiac Soul* (2018), explores the Zodiac Wheel as an initiatory journey of the soul: twelve gateways to wholeness. John Wadsworth holds an MA in Cultural Astronomy & Astrology from Bath Spa University; he teaches night-sky astronomy and runs a mobile planetarium for schools. www.yourzodiacsoul.com
www.kairosastrology.co.uk

HARTMUT WARM is a civil engineer and independent researcher in astronomy, geometry, harmonics and musical aesthetics. He teaches, lectures and has published widely. He lives in Hamburg, Germany. In his book *Signature of the Celestial Spheres* (2010), Hartmut unfolds the astonishing discovery of a complex order in our solar system. His presentation will focus on the ancient concept of a harmony of the spheres, with reference to Kepler's revolutionary ideas. Based on modern astronomical and mathematical algorithms, Hartmut demonstrates with computer-aided graphics how the inherent order and movement of the planets corresponds to the beauty of geometrical forms and musical intervals.
www.keplerstern.com



MARIA WHEATLEY is a second generation dowser and a leading authority on geodetic earth energies. She has been a professional tutor for over 20 years and is a tour guide of sacred sites in Britain and Europe. She will present groundbreaking research not previously shared on the significance of Celtic constellations associated with ancient sites. Maria Wheatley is the author of *Avebury: Sun, Moon & Earth Energies* (with Busty Taylor 2008), *The Essential Dowsing Guide* (ed. Dennis Wheatley 2010), *Discovering Wiltshire* (2011), *Divining Ancient Sites* (2014), *The Elongated Skulls of Stonehenge* (2016), and *Druidic Soul Star Astrology* (2018). www.theaveburyexperience.co.uk